

We Automate. You Innovate.

Fishbowl's Utilities work within the Windchill system to add features that will save time, errors and money.

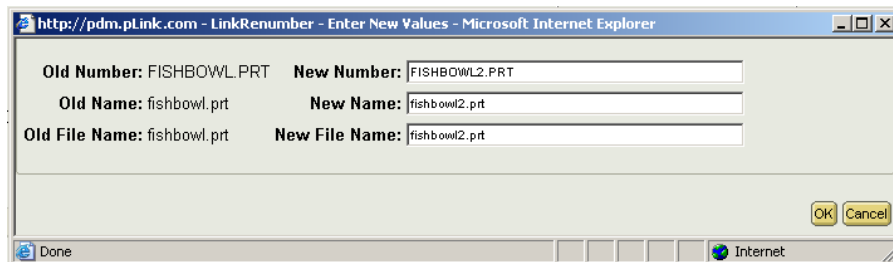
linkPurge™

linkPurge quickly and easily purges all but the latest viewables to re-capture expensive vault space from obsolete and outdated viewables.



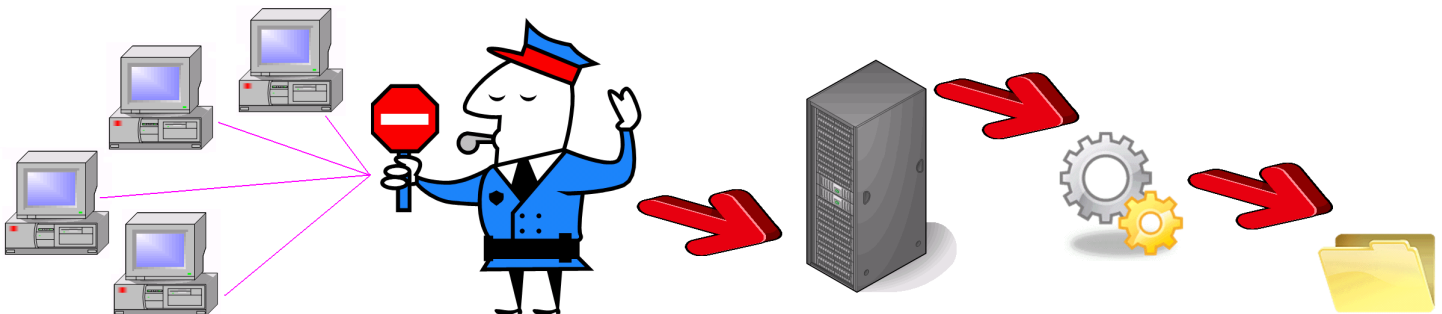
linkReNumber™

linkReNumber allows a user to freely modify names and numbers, through a simple user interface, on both WTDocuments and EPMDocuments, even with auto numbering enabled. It validates that the new number is unique in the system and also checks that Object Initialization Rules are satisfied. linkReNumber can also be configured to allow users with simple Modify rights to perform renumbering on Released objects without assigning full Admin rights.



linkTrigger™

linkTrigger ensures that the format associated with a drawing is on an organization's approved format list and is the latest iteration available. It catches this common mistake early in the process, saving time and effort. linkTrigger can also assist an organization in meeting compliance with the new RoHS WEEE directives.



Revision Updater™

Revision Updater re-assigns the revision on a list of objects, avoiding the painful processing of re-migrating or re-loading an organization's data. Revision Updater allows a user to re-assign the revision on the latest version of the object without creating a new iteration.

Search Results (6 of 117 total objects) Current View: Simple

Number	Name	Actions	Version
54237.PRT	BALL SEAL	Actions	1.1
72130.PRT	BASKET	Actions	1.1
73005.PRT	CONTROL KNOB - 1ST SHOT	Actions	1.1
73005-01.PRT	CONTROL KNOB - 1ST SHOT	Actions	1.1
73010-01.PRT	CONTROL KNOB - 2ND SHOT	Actions	1.1
73010.PRT	CONTROL KNOB - 2ND SHOT	Actions	1.1

(0 objects selected) Page 1 of 20 First 1 2 3 4 5 6 7 8 9 10 Last Full List



Search Results (6 of 117 total objects) Current View: Simple

Number	Name	Actions	Version
54237.PRT	BALL SEAL	Actions	C.1
72130.PRT	BASKET	Actions	K.1
73005.PRT	CONTROL KNOB - 1ST SHOT	Actions	D.1
73005-01.PRT	CONTROL KNOB - 1ST SHOT	Actions	L.1
73010-01.PRT	CONTROL KNOB - 2ND SHOT	Actions	C.1
73010.PRT	CONTROL KNOB - 2ND SHOT	Actions	S.1

(0 objects selected) Page 1 of 20 First 1 2 3 4 5 6 7 8 9 10 Last Full List

Attribute Updater™

Attribute Updater assigns Soft Attributes (IBA's) to a list of objects without the need to create new iterations of each object. Attribute Updater can also assign values to either WTDocuments or EPMDocuments, using a simple command line interface.

Search Results (6 of 117 total objects) Current View: IBAs

Number	Name	Actions	Material	Width	Height	Depth
54267.PRT	O-RING	Actions				
71055.PRT	ENGINE NUT	Actions				
72155.PRT	DIVERGENCE CONE	Actions				
71000.ASM	SHOWER HEAD	Actions				
73000-01.ASM	CONTROL KNOB - SMALL	Actions				
72140.ASM	SPRAY HEAD	Actions				

(0 objects selected) Page 1 of 20 First 1 2 3 4 5 6 7 8 9 10 Last Full List



Search Results (6 of 117 total objects) Current View: IBAs

Number	Name	Actions	Material	Width	Height	Depth
54267.PRT	O-RING	Actions	Rubber	0.50	0.50	0.1250
71055.PRT	ENGINE NUT	Actions	Steel	0.750	0.750	0.3750
72155.PRT	DIVERGENCE CONE	Actions	Nylon	0.750	0.3750	1.25
71000.ASM	SHOWER HEAD	Actions	Chrome Steel	1.75	3.50	1.75
73000-01.ASM	CONTROL KNOB - SMALL	Actions	Polystyrene	2.125	2.125	4.375
72140.ASM	SPRAY HEAD	Actions	Chrome Steel	3.25	3.25	2.375

(0 objects selected) Page 1 of 20 First 1 2 3 4 5 6 7 8 9 10 Last Full List

Check in at Any Revision™

Check in at any Revision adds a new menu selection to the existing Windchill Check-In Wizard that allows users to specify the revision from a drop-down list that includes only the valid revisions for an organization.

Attributes (7 total objects)

* Name	Value
Number	(Generated)
* Name	
Description	
* Location	<input type="radio"/> Autoselect Folder (/Moen Showerhead Training) <input checked="" type="radio"/> Select Folder /Moen Showerhead Training
Life Cycle Template	(Generated)
Team Template	(Generated)
Revision	1 <input type="button" value="Select Revision Label"/>

Fishbowl also specializes in building custom applications to meet your needs. If there are other features or utilities that could be used, please contact Fishbowl to discuss a solution for your company.