

## eAccess™

Provide Simple, secure, web-based access to Pro/INTRALINK® data.

### business need

Industry statistics state that for every one person creating data there are ten others in the organization that need access to it. However, with the complexity of today's engineering environment and tools, having easy access to this data has never been more challenging. Currently, individuals outside the engineering department have to make a special request to obtain expensive engineering resources away from critical projects. Ultimately this costs organizations valuable time, money and resources, in addition to causing an unnecessary information bottleneck.

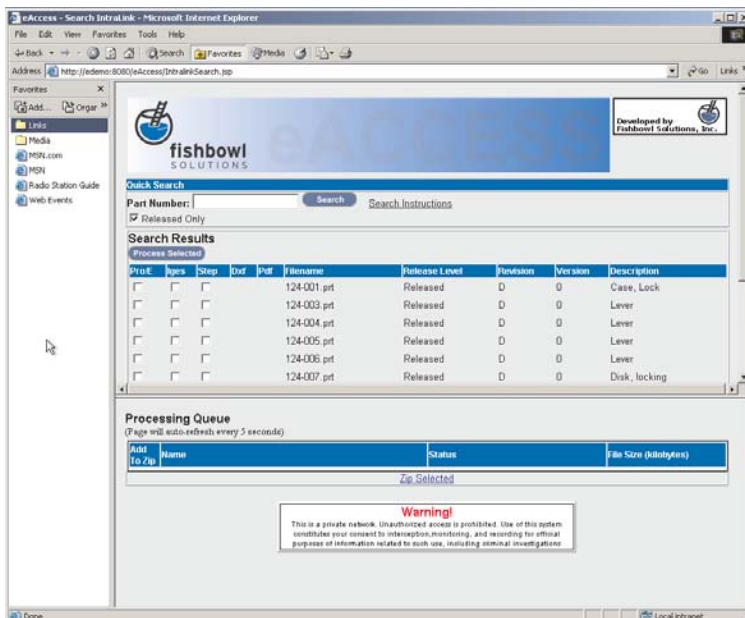
Wouldn't it be nice if individuals outside engineering had simple, secure, "self-serve" access to engineering information they needed to do their work?

### solution

eAccess delivers this solution, simply and powerfully.

eAccess is an easy-to-use web-based program that delivers end users quick access to important data that resides within Pro/INTRALINK® CommonSpace. This includes metadata and the ability for on-demand output of 3D CAD and 2D drawing files in virtually any desired format (e.g. PDF, native Pro/ENGINEER, IGES, STEP and DXF).

eAccess is a highly robust backend technology that is able to handle large assembly data sets, assemblies that include challenging Family Table parts and Pro/PROCESS® drawings better than any product in its class. Best of all, it's guaranteed. Another key feature of eAccess is the built-in data bundling functionality. End Users can choose multiple files, convert them into multiple formats and then automatically combine them into one .ZIP file to easily e-mail to a supplier or similar resource.



The simple, web-based eAccess interface allows you to specify the format for delivery of Pro/ENGINEER data.

With eAccess you can:

- Deliver web-based access to CAD data from Pro/INTRALINK.
- Deliver on-demand output of CAD files in Pro/E, STEP, IGES, DXF and PDF formats.
- Search and view Pro/INTRALINK metadata.