

## eVerify™

### Automate the verification of Family Tables within the Pro/INTRALINK® CommonSpace

#### business need

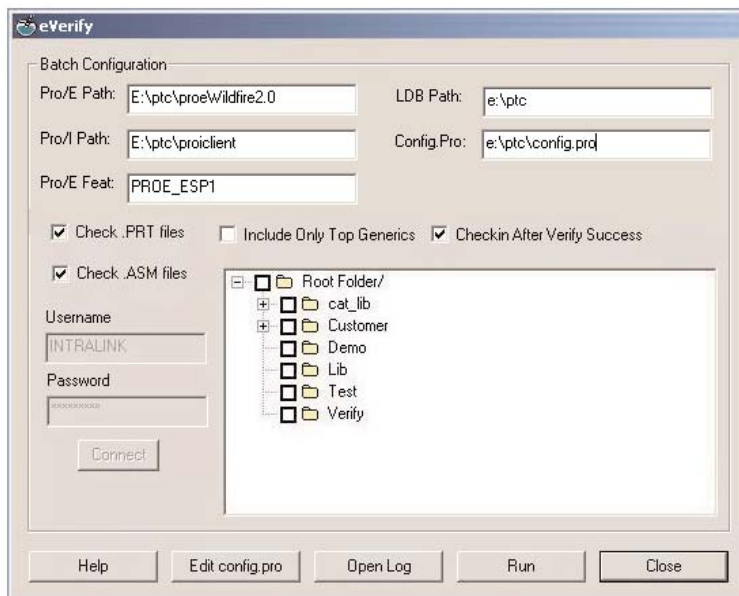
The validity (i.e. “health” or “cleanliness”) of Pro|ENGINEER® files in Pro/INTRALINK is important because invalid or corrupt data inhibits data reuse and diminishes user productivity. Implementing and enforcing Best Practices will help improve the health of Pro|ENGINEER data. One important Best Practice, specific to Family Tables, is Family Table verification.

Most users have bypassed Family Table verification out of convenience and under the guise of saving time. By not following this Best Practice, though, companies are often faced with corrupt data - like files that will not regenerate. Invalid data costs companies valuable time.

Pro/INTRALINK has made verification mandatory as the default, but the system can still be configured to bypass it. Furthermore, because legacy data has often not been verified, data quality is not consistent. eVerify from Fishbowl Solutions fills this gap, automating the verification of Family Tables and delivering reports of tables that are corrupt. eVerify helps clean data, enhancing productivity and ensuring better data reuse.

#### solution

**eVerify**, part of Fishbowl Solutions’ family of Pro/INTRALINK productivity solutions, systematically and automatically verifies Family Tables in the Pro/INTRALINK Common Space and notifies users of errors. Not only can companies automate the tedious, non-value-added activity of verification, but they can also clean up legacy data and begin seeing the benefits of clean data - today!



eVerify runs on Microsoft Windows-based workstations or servers. It provides a graphical user interface which walks the administrator through the steps of verifying Family Tables:

Administrator browses the Pro/INTRALINK Common Space and selects folders to include in verification.

Administrator chooses to verify part and/or assembly Family Tables.

eVerify searches each selected folder for the appropriate Family Table Objects.

eVerify checks out, opens parts and assemblies in Pro|ENGINEER and verifies as needed.

Verified objects are then checked back into the Pro/INTRALINK Commonsapce.

All results of the verification are captured in a detailed report.